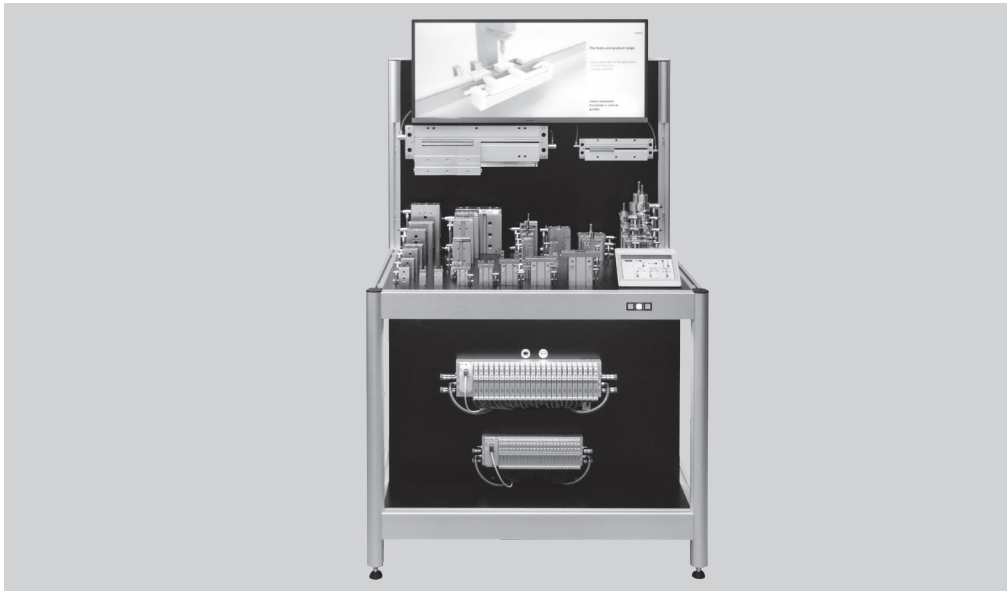


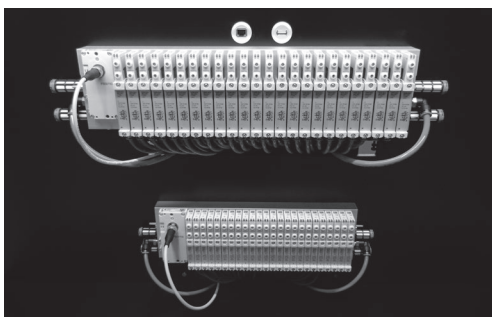
The Festo ★ core product range – simply part of the solution

FESTO

Dynamic Display
D-FA1901



Festo's core product range includes more than 2200 product types and is distinguished by quick selection, online ordering anytime, worldwide availability from stock and quick shipping – all at an attractive price. In addition to electric automation, your entire pneumatic control chain can be implemented with Festo's core product range: from compressed air preparation, valves and cylinders, right on up to tubing, fittings and sensors – everything from Festo. Numerous compact sizes which are meanwhile included in the product range permit even smaller machine footprints. From simple linear and guided motion, as well as standard pick & place requirements, all the way up to precision gantry systems – roughly 80% of all applications can be set up with the core product range.



Compact with high flow rates – the cost-effective valve terminal VTUG supplies actuators with compressed air.



The actuators are controlled by modules on the CPX terminal.

The Festo ★ core product range – simply part of the solution

Guided drives:

Mini slides DGST and guided drives DFM

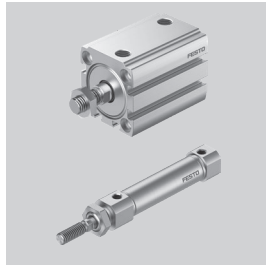


Your benefits

- Compact and precise
- Powerful and durable
- Easy implementation, commissioning and operation
- Diverse symmetrical interfaces
- Full range of sizes

Piston rod drives:

Compact cylinders ADN-C and round cylinders DSNU-S

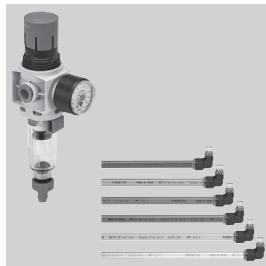


Your benefits

- Weight-optimised
- Space-saving
- Quick and reliable delivery, even in large quantities

Compressed air supply:

Service unit components MS2 and polyurethane tubing PUN-H

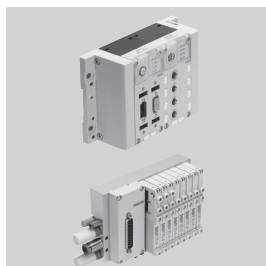


Your benefits

- Reliable Festo quality
- Less weight
- High flow rates
- Everything from a single source

Controller:

Modular electric terminal CPX and valve terminal VTUG



Your benefits

- Compact universal solution
- Less weight
- Can be accurately adapted to your requirements
- Ideally matched to each other